

## PEES Power Systems

# Which side of solar glass should be used



## Overview

---

Place 40 to 50 percent of the total glass area on the south side of the house and minimize window area on east or west-facing walls. This will help provide year-round moderate temperature control without excessive solar heat gain in the summer. Use a “time-of-day” room layout. If you still want to use rammed earth on the exterior the common fix is to insulate the outside of the wall with styrofoam insulation which then receives a weather skin, usually of stucco. This guide explores industry best practices, real-world case studies, and data-driven insights to help architects and solar installers make informed decisions. Keep activity areas. Orientation Impact is Massive: The difference between optimal and poor solar panel placement can impact energy production by up to 30%, making proper positioning one of the most critical factors in maximizing your solar investment return. Magnetic South Matters: Using magnetic south. South-facing glass plays a critical role in the design of passive solar buildings, enabling them to reduce energy consumption while maintaining a comfortable interior environment. Positioned strategically, these windows allow the sun's energy to enter the living space during colder months, storing.

## Which side of solar glass should be used

---

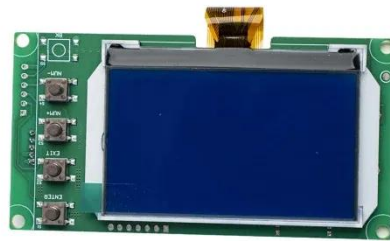


### Window glass selection for southern exposure (passive ...

The dilemma comes in on which glass to use on the southern exposure. Any thoughts on how we might reconcile these competing needs?

## Passive Solar Orientation

To maximize energy efficiency, a house should have a simple, compact shape, with the long axis running east to west. Place 40 to 50 percent of the total glass area on the south side of the house and minimize window ...



## Southern Facing Windows in Passive Solar Houses , Green Passive ...

Seasonal Window Considerations Building Orientation South Facing Windows and Orientation Vertical and Angled Glass Because the sun rises in the east and sets in the west, the side of the building that is utilized for solar gain needs to be facing the south to take maximum advantage of the sun's potential energy. If the building's axis is



located on the east-west direction with its longest dimension facing the south, more of the building is situated to absorb the See more on greenpassivesolar My Florida Home Energy

## Passive Solar Orientation - My Florida Home Energy

To maximize energy efficiency, a house should have a simple, compact shape, with the long axis running east to west. Place 40 to 50 percent of the total glass area ...

### Southern Facing Windows in Passive Solar Houses , Green Passive Solar

Because the sun rises in the east and sets in the west, the side of the building that is utilized for solar gain needs to be facing the south to take maximum advantage of the sun's potential energy.



LPW48V100H  
48.0V or 51.2V



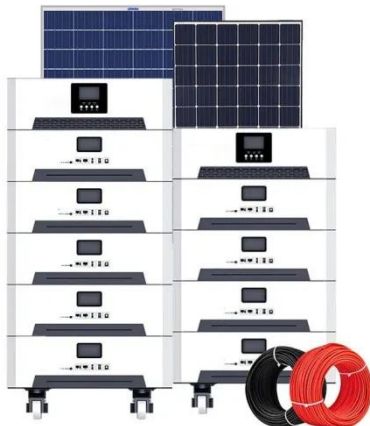
### Solar Panel Direction & Orientation: 2025 Complete Guide

Solar panels should face true south, not magnetic south. The difference between these directions, called magnetic declination, can vary by up to 30 degrees depending on your location.

## Harnessing the Power of South-Facing Glass in Passive Solar Buildings

The strategic use of south-facing glass in passive solar buildings is both art and science. By carefully selecting the size, glazing type, and shading system for these windows, passive solar design can

...



## Understanding Reflected Solar Energy of Glazing Systems in Buildings

Normally for a high summer sun, low solar irradiance occurs on a vertical surface at mid-day and high solar irradiance occurs on a vertical surface shortly after sunrise for an east facing location and just before sunset ...

## South-facing Glass in Passive Solar Building: How to Determine its

Generally, the south-facing windows should have a high solar heat gain coefficient of 0.55 or greater and a low U-factor of 0.35 or less to maximize heat gain and minimize heat loss.





## Window Orientation and Shading

They need to be brightly reflecting toward the outside, so that solar radiation admitted through the glass is reflected by the shade back out through the window.

---

## Which Side is Suitable for Photovoltaic Glass? A Practical Guide for

Summary: Choosing the optimal orientation for photovoltaic glass is critical for maximizing energy efficiency. This guide explores industry best practices, real-world case studies, and data-driven insights to help ...



## Types of Glazing for Passive Solar

In order to increase this you would need some solar input into the house. If the sun is straight up most of the time, not much of it can be expected to enter through vertical glass. With slanted glass you could expect to ...

---

**Contact Us**

For catalog requests, pricing, or partnerships, please visit:  
<https://peregrine-energy.co.za>

