

PEES Power Systems

Select a large solar inverter



Overview

** For large on-grid solar systems (over 100 kW), central inverters like SMA's Sunny Central 2500-EV excel in utility-scale projects (500 kW+), offering low costs per watt. This guide breaks down what size solar inverter you actually need—so your setup runs smooth, efficient, and stress-free from day one. Solar panels generate direct current (DC) electricity, but your home runs on alternating current (AC). The inverter handles this crucial conversion, and its size directly impacts your system's. Choosing the right solar inverter size is critical—and one of the most common questions: what solar inverter size do I need?

Whether you are installing a rooftop system in California, powering a remote cabin in Alberta, or sizing for a community center in Rajasthan, getting it right means. Choosing the right size for a solar inverter can feel confusing, especially when most guides bury you under formulas and electrical jargon. But here is the truth: you don't need to be an electrician to make a smart inverter choice.

Select a large solar inverter



How to Choose the Right Solar Inverter in 2025: A Complete Guide for

We leverage our expertise to help you make informed decisions, ensuring your solar system delivers peak performance. This guide will help you navigate your options to make the best ...

What Size Solar Inverter Do I Need? Experts Break It Down

Picking the right solar inverter isn't rocket science, but it's not a wild guess either. Match your inverter size to your solar panel output, leave a little headroom, and don't cheap out on quality.



Solar Inverter Sizing Guide: How to Size Your Inverter

Learn how to properly size your solar inverter with our complete guide. Discover the optimal DC-to-AC ratio and avoid costly sizing mistakes.

How to Choose the Right Inverter Size for Your Solar System?

In this guide, we'll explain the key factors to consider, including AC output limits, oversizing PV arrays, battery compatibility, and how to choose the best inverter for your needs.



How to Match Solar Panel Inverter Size to Your System Output

Inverters come in standard sizes like 3kW, 5kW, 6kW, 8kW, and 10kW. Round to the nearest size--in our example, choose a 5.5kW or 6kW solar inverter for home use. A typical 4kW ...

How to Determine the Right Solar Inverter Size for Your System

In this guide, we'll walk you through exactly how to calculate the correct solar inverter size, what factors influence the decision, and how to avoid costly mistakes like inverter clipping or ...



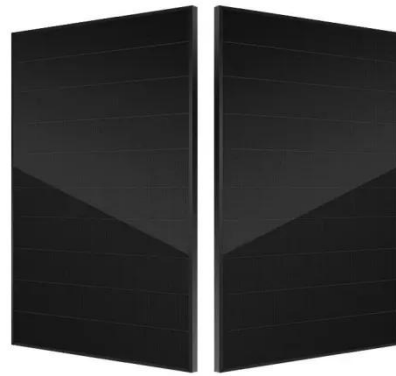
Complete Solar Inverter Sizing Guide



Solar inverter sizing made simple with clear steps for calculating load demand and matching inverter capacity to solar panels.

How to Choose the Right Size Solar Inverter: Step-by-Step with Real

Wondering what size solar inverter do I need for your solar system? This guide walks you through calculating inverter size based on panel capacity, power usage, and safety margins.



Which inverters are best for large on-grid solar applications

This guide covers inverter roles, types, features, manufacturers, selection tips, and real-world cases to help you choose wisely. I've spent years perfecting solar solutions at RENDONO® Solar.

Inverter Guide: 7 Tips To Choose The Right Inverter

In this guide we will explain how to size a solar inverter, define key terms like the DC-to-AC ratio and clipping, compare inverter types, and provide practical tips for choosing the right unit for ...



Contact Us

For catalog requests, pricing, or partnerships, please visit:
<https://peregrine-energy.co.za>

