

## PEES Power Systems

# Rhino Photovoltaic Bracket Modeling



## Overview

---

In this tutorial, we will observe how to model a parametric solar canopy using Rhino 3D. We will use commands like Line, Arc, Trim, Join, Offset, Cap, ExtractCrv, ArrayPolar, Circle, SetPt, and Solid Extrude to create a clean parametric outdoor structure. We've developed tens of commands to automatically fix every common issue in energy models and have successfully built and exported hundreds of real-world models. We're confident in our approach and guarantee accurate. The objective of this exercise is to practice how to design a rooftop PV system. Initially you will use annual radiation maps in DIVA-for-Rhino to place and orient 1x1. You may add as many panels as you. From a complete 3D digital model including terrain, vegetation, buildings any other potentially "masking" elements, RhinoSolar™ allows to evaluate the solar potential of your infrastructures. It supports a series of environmental analysis workflows for buildings and neighborhoods, including annual illuminance simulations, glare and thermal comfort distributions in. RhinoSolar is a plug-in for Rhinoceros that automates the process of assessing solar energy potential. Used by cities like Grand Lyon and Brest, RhinoSolar helps urban planners.

## Rhino Photovoltaic Bracket Modeling

---

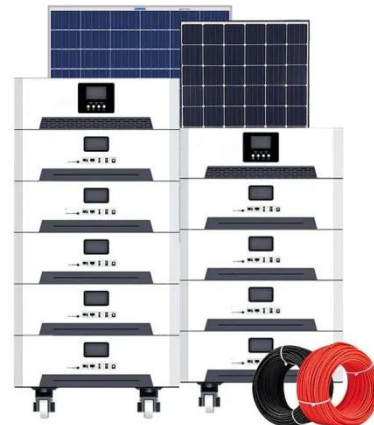


### Archsim Energy Modeling

Archsim Energy Modeling is a plugin that, for the first time, brings fully featured EnergyPlus simulations to Rhino/Grasshopper and thus links the EnergyPlus simulation engine with ...

### Welcome to the ClimateStudio User Guide

ClimateStudio is a plugin for the Rhinoceros (Rhino) 3D modeling software developed and distributed by Robert McNeel & Associates. An installed version of Rhino 6, 7, or 8 with a valid license is required ...



### Rhino Tutorial , Outdoor Design - Parametric Solar ...

In this tutorial, we will observe how to model a parametric solar canopy using Rhino 3D.

### Grasshopper-CEA Part 5:

## Estimate solar energy potential using ...

In this post, I introduced how to estimate the solar energy potential using CEA in Rhino 6 with given geometries. The following figure presents the district simulated in Scenario 2.



## 5.2. Passive Design and Comfort Part 2: Visualizing Thermal ...

June 21st is chosen as our model summer design day. Create a "LB Incident Radiation" and set the reference values for grid size and offset distance before running the component.

## Modeling and assessing BIPV envelopes using parametric

Afterwards, parametric modeling was performed - comprising 3D models, assessment, BIPV design alternatives and respective energy production. Finally, design options were assessed ...



## Daylighting Handbook

The objective of this exercise is to practice how to design a rooftop PV system. This will be a three step process.

Initially you will use annual radiation maps in DIVA-for-Rhino to place and orient 1x1.5m2 ...



---

## Rhino Plugin

Effortlessly create, visualize, and edit energy models with the Pollination Rhino Plugin. Take advantage of Rhino3D's powerful modeling tools to handle large multi-room, multi-story models with ease.



---

## Contact Us

For catalog requests, pricing, or partnerships, please visit:  
<https://peregrine-energy.co.za>

