

PEES Power Systems

How the wind moves wind turbines



How the wind moves wind turbines

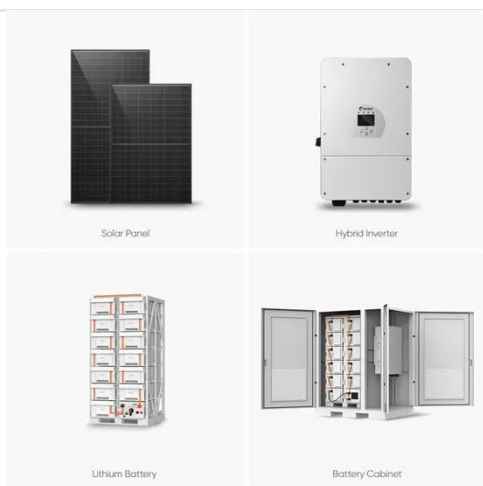


How do wind turbines work?

When wind blows past a plane's wings, it moves them upward with a force we call lift; when it blows past a turbine's blades, it spins them around instead. The wind loses some of its ...

How Wind Power Works

In the case of a wind-electric turbine, the turbine blades are designed to capture the kinetic energy in wind. The rest is nearly identical to a hydroelectric setup: When the turbine blades capture wind ...



How Wind Turbines Generate Power -- From Blade to Grid

To truly understand how wind turbines generate power--from the movement of their blades to the delivery of electricity into the grid--it is essential to explore every stage of the process, ...

How Wind Works

A modern turbine includes a series of blades mounted around a rotor to catch the wind and translate its kinetic energy into rotational energy. Just as traditional windmills used that rotational energy to grind ...

ESS



Electricity generation from wind

Wind turbines use blades to collect the wind's kinetic energy. Wind flows over the blades creating lift (similar to the effect on airplane wings), which causes the blades to turn.

How Do Wind Turbines Work? , NOVA , PBS

Rather than being pushed like sails, wind turbine blades act more like airplane wings. They're shaped so that wind flows at different speeds above and below them.



How a Wind Turbine Works

Wind turbines work on a simple principle: instead of using electricity to make wind--like a fan-- wind turbines use wind to make electricity. Wind turns the



propeller-like blades of a turbine around a rotor, ...

How does a wind turbine work?

How does a wind turbine work? Wind turbines can turn the power of wind into the electricity we all use to power our homes and businesses. They can be stand-alone, supplying just one or a very small ...



How Wind Turbines Work , EARTH 104: Energy, Environment, and ...

The workings of a wind turbine are much different, except that instead of using a fossil fuel heat to boil water and generate steam, the wind is used to directly spin the turbine blades to get the generator ...

How does a wind turbine work?

To truly understand how wind turbines generate power--from the movement of their blades to the delivery of electricity into the grid--it is essential to explore every stage of the process, ...



Contact Us

For catalog requests, pricing, or partnerships, please visit:
<https://peregrine-energy.co.za>

