

PEES Power Systems

How much power motor does a 5g base station use



How much power motor does a 5g base station use



5G power consumption is 2.5 to 3 times of 4G

The power consumption of a 5G single station is 2.5 to 3.5 times that of a 4G single station. The increase in AAU power consumption is the main reason for the increase in 5G power ...

Power Consumption: 5G Basestations Are Hungry, Hungry Hippos

5G basestations are pushing up power requirements by three times, as MIMO and more digital circuitry require more power.



Power consumption based on 5G communication

At present, 5G mobile traffic base stations in energy consumption accounted for 60% ~ 80%, compared with 4G energy consumption increased three times. In the future, high-density overlapping ...

How much power motor does a 5G base station use

In addition to other small modules that use electricity, the power consumption of a single 5G base station is generally around 3700 watts, which is about three times that of 4G

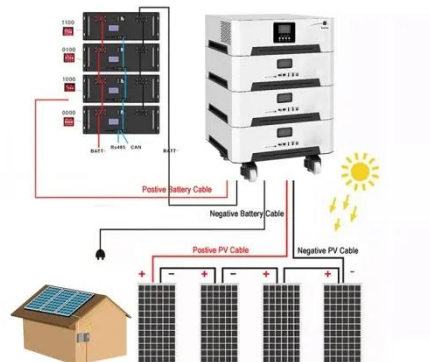


Front Line Data Study about 5G Power Consumption

The power consumption of a single 5G station is 2.5 to 3.5 times higher than that of a single 4G station. The main factor behind this increase in 5G power consumption is the high power usage of the active ...

Size, weight, power, and heat affect 5G base station designs

Energy use will increase dramatically with 5G because a typical gNodeB uses at least twice as much electricity as its 4G counterpart, MTN says. Higher opex makes it difficult for operators ...



5G base stations use a lot more energy than 4G base stations: MTN



A typical 5G base station consumes up to twice or more the power of a 4G base station, writes MTN Consulting Chief Analyst Matt Walker in a new report entitled " Operators facing power ...

How Much Power Does 5G Base Station Consume? , Huijue Group E ...

The average 5G base station consumes 2.5-4 kW daily - equivalent to powering 40 refrigerators simultaneously. Three factors amplify this: Operators now spend 20-40% of OpEx on ...



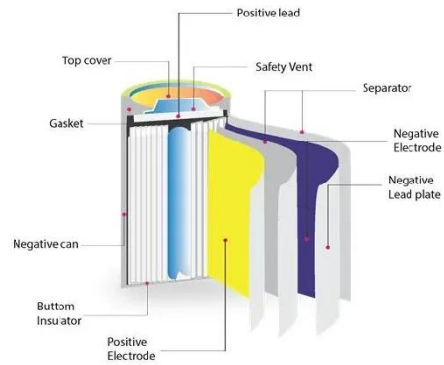
5G base station power

These 5G base stations consume about three times the power of the 4G stations. The main reason for this spike in power consumption is the addition of massive MIMO and

What is the Power Consumption of a 5G Base Station?

Ericsson has been able to innovate a 5G

base station that consumes only 20% energy when the traffic is low compared to a normal setup. This achieves through advanced software ...



5G base stations use a lot more energy than 4G base ...

A typical 5G base station consumes up to twice or more the power ...

Contact Us

For catalog requests, pricing, or partnerships, please visit:
<https://peregrine-energy.co.za>

