

PEES Power Systems

How much power does the inverter supply

Nominal Capacity

280Ah

Nominal Energy

50kW/100kWh

IP Grade

IP54



How much power does the inverter supply



Inverter Capacity Calculator

Understanding inverter capacity is essential for ensuring that your backup power system can handle the electrical demands of all connected devices efficiently. This guide explores the ...

The Only Inverter Size Chart You'll Ever Need

How to Determine What Size Inverter I Need? What Are The Two Types of Power loads? Inverter Size Chart What Will A 300W Inverter Run? What Will A 500W Inverter Run? What Will A 700W Inverter Run? What Will A 1000W Inverter Run? What Will A 1500W Inverter Run? What Will A 2000W Inverter Run? What Will A 3000W Inverter Run? Appliances this inverter can run A 2000W inverter is a reliable source of continuous power for your most demanding equipment, such as power tools (driller, grinder, jigsaw, etc.). In addition, it can be a lifesaver in case of a power outage - 2000W is enough to run all of your basic domestic appliances, including a large fridge/freezer. See more on [climatebiz Renogy](#)



What Size Inverter Do You Need for Your Home?

When choosing the size of the inverter, you need to consider several things, including the continuous power or running wattage of all appliances and surge ...



Inverter Load Calculation: A Complete Guide for Your Home

Use our free inverter load calculator to determine the right VA and Ah for your home. Learn how to calculate electricity load in kW for better power backup.

Inverter Power Draw: How Much Power Does an Inverter Use from a ...

According to the U.S. Department of Energy, modern inverters can have efficiency ratings between 80% to 95%. This means that if an inverter needs to deliver 1,000 watts of AC ...

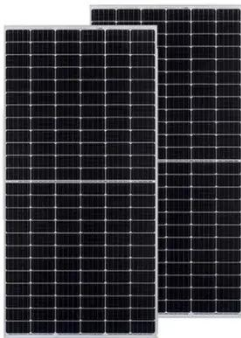


What Size Inverter Do I Need?

An inverter needs to supply two needs: Peak or surge power, and the typical or usual power. Surge is the maximum power that the inverter can supply, usually for only a short time (usually no longer than ...

Frequently Asked Questions about Inverters

There is a simple method to calculate how much power your inverter is using: For 12-volt inverters, divide the connected load by 10; for 24-volt inverters, divide by 20.



What Size Inverter Do You Need for Your Home? , Renogy US

When choosing the size of the inverter, you need to consider several things, including the continuous power or running wattage of all appliances and surge capacity or the highest starting wattage to ...

How Much Power Does a Solar Inverter Need

Solar inverter or photovoltaic inverter is a power inverter that can easily convert direct current to AC. Returning to the solar inverter power needs, it is around 10-25 W, and its efficiency ...



The Only Inverter Size Chart You'll Ever Need



We have created a comprehensive inverter size chart to help you select the correct inverter to power your appliances.

How to Determine the Right Inverter Sizes for Your Needs

Choosing the right inverter size ensures your electrical needs are met efficiently and safely. An inverter converts direct current (DC) electricity from sources like batteries or solar panels ...



Inverter Efficiency: Understanding How Much Power You're Really ...

Understand inverter efficiency, inverter performance and inverter rated power to see how much usable energy your inverter delivers and how to maximize it.

Contact Us

For catalog requests, pricing, or partnerships, please visit:
<https://peregrine-energy.co.za>

