

## PEES Power Systems

# How does the baseband communicate with the base station



## Overview

---

The baseband processor converts signals to digital form. A duplexer lets one antenna transmit and receive at once. A control unit manages power, channels, and timing. The present-day tele-space is incomplete without the base stations as these constitute an important part of the modern-day scheme of wireless communications. These types of objects are an inevitability since they serve the purpose of. A base transceiver station (BTS) or a baseband unit[1] (BBU) is a piece of equipment that facilitates wireless communication between user equipment (UE) and a network. Found at the heart of mobile networks, these stations.

## How does the baseband communicate with the base station

---



### Understand Cellphone Basestation Technology » Electronics Notes

The baseband unit, BBU is the entity within the base station that processes the baseband signals, i.e. the signals which are at the original frequency of a transmission prior to modulation onto the signal ...

---

### What are Base Station in Telecommunications?

Base stations contain several key parts. The antenna sends and receives radio energy. The transceiver handles signal modulation. The baseband processor converts signals to digital form. ...



---

### What is a Base Station in Telecommunications?

Discover the role and functionality of a base station in telecommunications networks. Learn how these critical components manage communication between mobile devices and the network, ensuring ...

## base station in 5g

Fronthaul connects the RF frontend and the baseband processing, while backhaul connects the base station to the core network, typically through fiber-optic or high-capacity wireless ...



## What Is a Telecom Base Station and How Does It Work?

In simple terms, the base station uses radio signals to cover a certain geographic area, allowing mobile devices within this area to connect to the communication network and the internet through the mobile ...

## Understanding the Basics of a Base Transceiver Station: A Simple Guide

At the heart of these networks are Base Transceiver Stations (BTS), which facilitate wireless communication by transmitting and receiving radio signals between mobile phones and the ...



## What Is A Base Station?

Base stations play a central role in two-way radio systems, such as citizens band

(CB) radio and ham radio. In these setups, the base station serves as a fixed point of communication, ...



---

## Base Stations and Cell Towers: The Pillars of Mobile Connectivity

Base stations use antennas mounted on cell towers to send and receive radio signals to and from mobile devices within their coverage area. This communication enables users to make ...



---

## Base Stations

The present-day tele-space is incomplete without the base stations as these constitute an important part of the modern-day scheme of wireless communications. They are referred to as cell ...

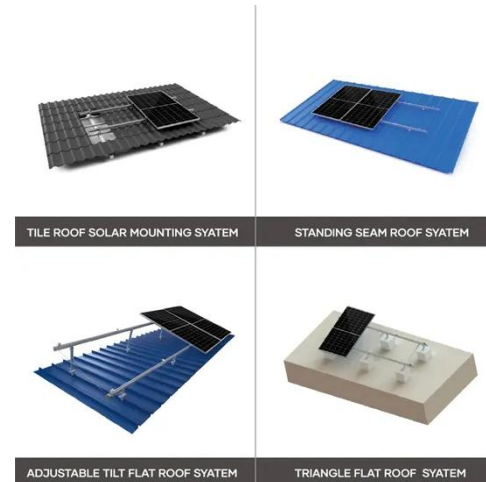


---

## Base transceiver station

A base transceiver station (BTS) or a baseband unit (BBU) is a piece of equipment that facilitates wireless

communication between user equipment (UE) and a network. UEs are devices like mobile phones (handsets), WLL phones, computers with wireless Internet connectivity, or antennas mounted on buildings or telecommunication towers. The network can be that of any of the wireless communication technologies like GSM, CDMA, wireless local loop, Wi-Fi, WiMAX or other wide area network (WAN) techn...



## Base transceiver station

A base transceiver station (BTS) or a baseband unit[1] (BBU) is a piece of equipment that facilitates wireless communication between user equipment (UE) and a network.

## Contact Us

For catalog requests, pricing, or partnerships, please visit:  
<https://peregrine-energy.co.za>

