

PEES Power Systems

Can 5G communication base stations be powered



Can 5G communication base stations be powered



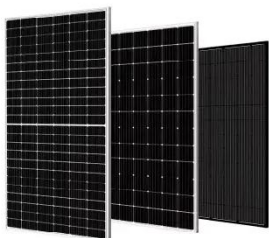
Comparison of Power Consumption Models for 5G Cellular Network Base

Power consumption models for base stations are briefly discussed as part of the development of a model for life cycle assessment. An overview of relevant base station power ...

Selecting the Right Supplies for Powering 5G Base Stations

...

As a result, a variety of state-of-the-art power supplies are required to power 5G base station components. Modern FPGAs and processors are built using advanced nanometer processes ...



Complete Guide to 5G Base Station Construction , Key Steps, ...

Key for connecting base stations into a network, this system ensures smooth communication. It becomes a top priority during power outages to maintain data flow. Outdoor base ...

Improved Model of Base Station Power System for the Optimal

Individual 5G base stations require 3-4 times more power than fourth-generation mobile communication technology (4G) base stations, and their deployment density is 4-5 times that of 4G ...



Optimal energy-saving operation strategy of 5G base station with

To further explore the energy-saving potential of 5 G base stations, this paper proposes an energy-saving operation model for 5 G base stations that incorporates communication caching and ...

The Critical Role of Redundant Power Design in 5G Base Stations

Power capacity redundancy means designing a base station power system with an output capacity significantly higher than the maximum expected load. It also includes backup power ...



Selecting the Right Supplies for Powering 5G Base Stations



Additionally, these 5G cells will also include more integrated antennas to apply the massive multiple input, multiple output (MIMO) techniques for reliable connections. As a result, a variety of state-of-the ...

What is the Power Consumption of a 5G Base Station?

These 5G base stations consume about three times the power of the 4G stations. The main reason for this spike in power consumption is the addition of massive MIMO and beamforming, ...



Energy Management of Base Station in 5G and B5G: Revisited

To achieve low latency, higher throughput, larger capacity, higher reliability, and wider connectivity, 5G base stations (gNodeB) need to be deployed in mmWave. Since mmWave base stations (gNodeB) ...



Why does 5g base station consume so much power and

how to ...

5G base stations use high power consumption and high RF signals, which require more signal processing for digital and electromechanical units, and also put greater pressure on AU ...



Contact Us

For catalog requests, pricing, or partnerships, please visit:
<https://peregrine-energy.co.za>

