

PEES Power Systems

Base station communication equipment identification



Overview

The guide then describes basic equipment needed in a base station: a transceiver (transmitter and receiver), a control device, microphone and speaker, a transmission line, and an antenna. A base transceiver station (BTS) or a baseband unit[1] (BBU) is a piece of equipment that facilitates wireless communication between user equipment (UE) and a network. UEs are devices like mobile phones (handsets), WLL phones, computers with wireless Internet connectivity, or antennas mounted on. The present-day tele-space is incomplete without the base stations as these constitute an important part of the modern-day scheme of wireless communications. They are referred to as cell towers or cellular antennas. These types of objects are an inevitability since they serve the purpose of. Except as provided for in paragraphs (d) and (e) of this section, each station or system shall be identified by the transmission of the assigned call sign during each transmission or exchange of transmissions, or once each 15 minutes (30 minutes in the Public Safety Pool) during periods of. This document is a compilation of documents developed in the Base Station Working Group. It ensures that users can access voice and data services effectively.

Base station communication equipment identification

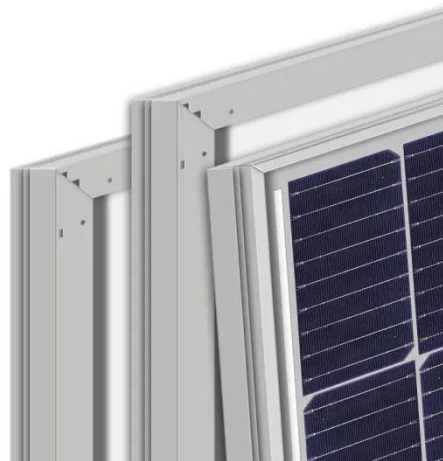


Base Stations

The present-day tele-space is incomplete without the base stations as these constitute an important part of the modern-day scheme of wireless communications. They are referred to as cell ...

What Is A Base Station?

Base stations are an essential component of cellular networks, providing coverage and connectivity to mobile devices within a specific area or cell. How does the base station work? A base ...



✓ TELECOM CABINET

✓ BRAND NEW ORIGINAL

✓ HIGH-EFFICIENCY

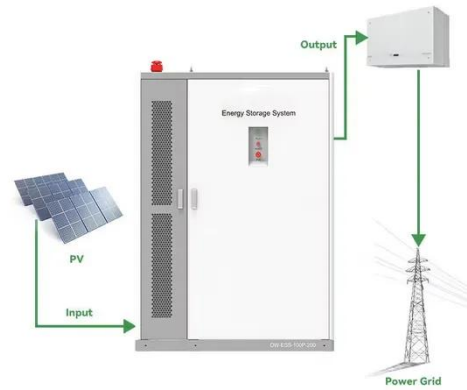
Base transceiver station

A base transceiver station (BTS) or a baseband unit[1] (BBU) is a piece of equipment that facilitates wireless communication between user equipment (UE) and a network.

Understanding the Base Station Subsystem: A

Comprehensive Guide

At its core, the BSS consists of two main components: the Base Transceiver Station (BTS) and the Base Station Controller (BSC). The BTS is responsible for facilitating wireless ...



Guide to Base Station Communications Equipment , Office of Justice ...

This guide presents background information to help law enforcement agencies analyze their base station equipment needs and select superior equipment to provide reliable communication between the ...

Base Station System Structure

To develop a base station reference model we will take a top-down approach that explores the system context from which the cellular service has evolved and toward which it is migrating. Then we will ...



eCFR :: 47 CFR 90.425 -

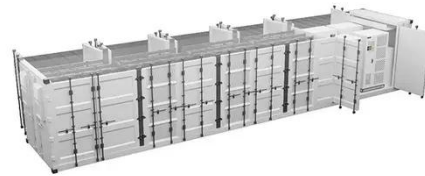
Alternatively, a base station (including a mobile relay station) which is controlled

by radio may be identified by the transmission of the call sign of the station at which communications originate.



Engineering:Base transceiver station

Though the term BTS can be applicable to any of the wireless communication standards, it is generally associated with mobile communication technologies like GSM and CDMA. In this regard, a BTS ...



Base station box communication equipment

The guide then describes basic equipment needed in a base station: a transceiver (transmitter and receiver), a control device, microphone and speaker, a transmission line, and an antenna.

Types Of Automatic Identification Systems (Per ITU-R M.1371 And ...

This network of 130 plus base stations,

collects over 120 million AIS message daily, which are shared with other government agencies (upon request). We also provide NAIS Historical Data ...



Contact Us

For catalog requests, pricing, or partnerships, please visit:
<https://peregrine-energy.co.za>

